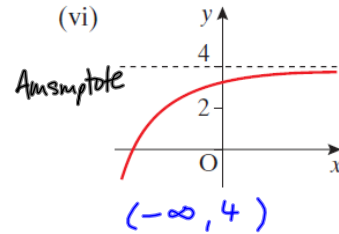
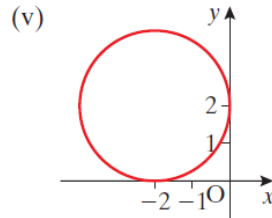
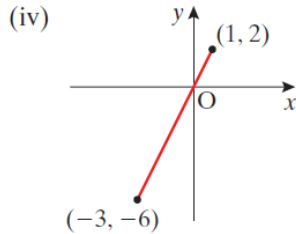
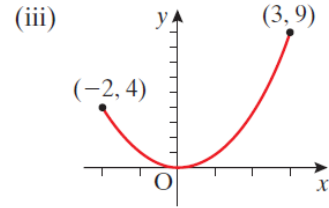
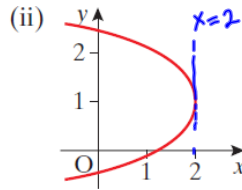
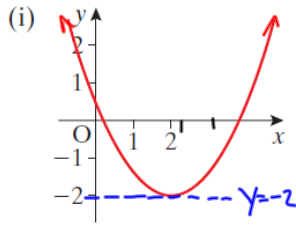


16. State the domain and range for the relations represented by each of the following graphs:



(i)	Domain: $-\infty \leq x \leq \infty$ ie $\forall x \in \mathbb{R}$ Range: $[-2, \infty)$
(ii)	Domain: $-\infty \leq x \leq 2$ ie $\forall x \in \mathbb{R} x \leq 2$ Range: $(-\infty, \infty)$
(iii)	Domain: $-2 \leq x \leq 3$ , $x \in \mathbb{R}$ Range: $[0, 9]$

17. Which of the graphs shown in Question 16 above represent functions?